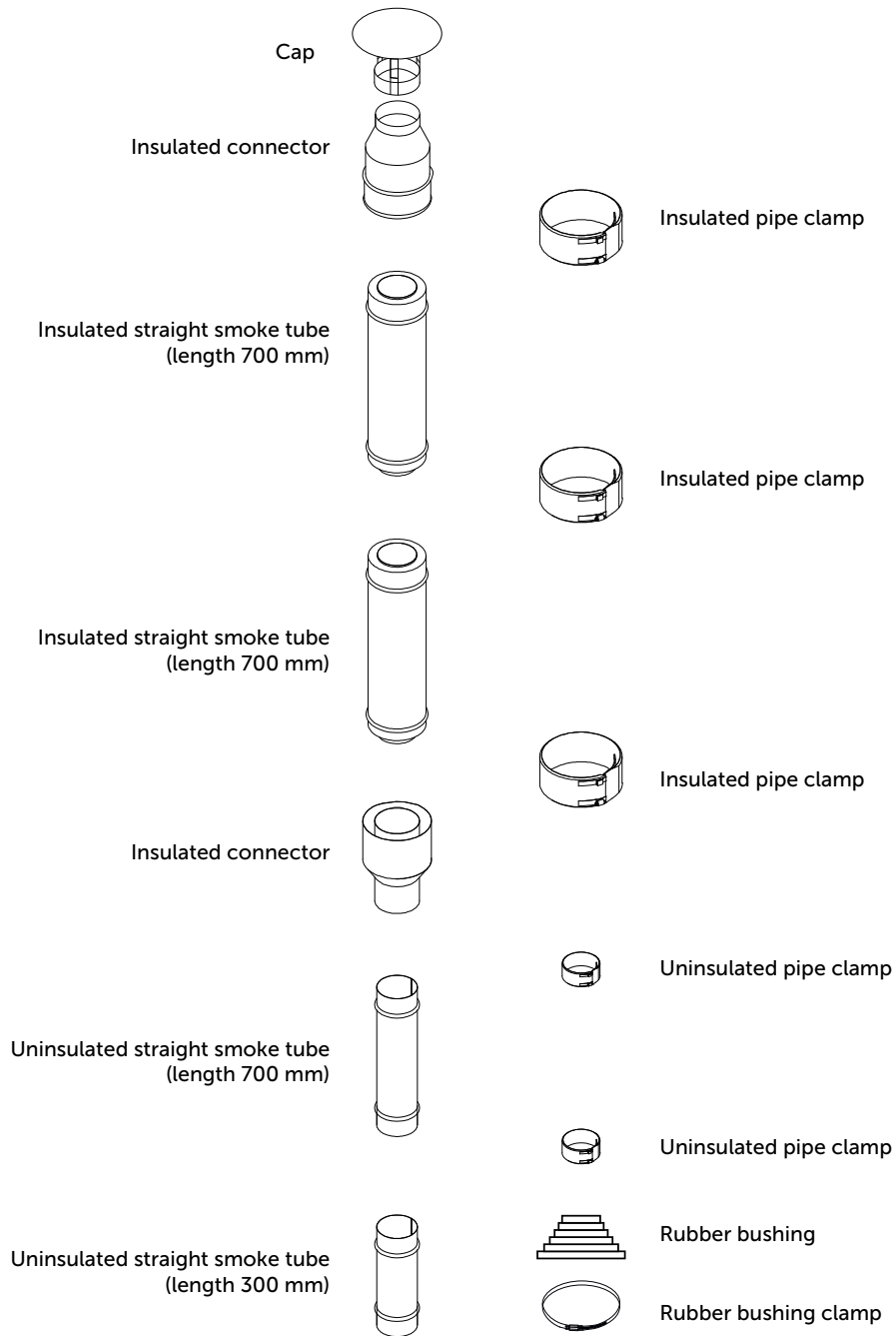



CHM-115

Modular chimney manual







Mitanox Chimney Liner Systems
Adnan Kahveci MH.
Fabrikalar Cd. NO:2/1
0432-CPD-2189 15/2012
Gürpınar-Bylıkdüzü/Istanbul www.mitanox.com.tr

EN 18 56-1
Modular chimney
Double-walled
T600 - N1 - D - VmL20070 - G100
Compressive strength
5,0 m
Flow resistance: NPD
Thermal resistance: NPD
Soot fire load: Yes
Flexural strength
Tensile strength: 5.0 m
Non-vertical layout: not allowed.
Wind load: Height without a backing:
2.0 m over the last backing point.
The maximum distance of lateral support: 3.0 m
Cold cycle assurance: Yes

NPD = parameter has not been determined

	Modular chimney	EN 1856-1	T600	N1	D	V2L50050	G100
Product description							
Number of the standard							
Temperature level (max. nominal chimney gas temperature in the replace 600 °C)							
Pressure level (N1: low pressure chimney)							
Condensate resistance (D: dry working conditions, chimney's gas temperature is higher than water condensation level)							
Corrosion resistance							
Soot re load (G: soot combustion resistant) and distance from combustive material (in millimetres)							

GENERAL INFORMATION

Rustproof modular chimney is a chimney that meets the CE-standard (international fire hazard and safety standard) and is prescribed to remove flue gas emitted by sauna stoves, iron stoves and fireplaces which are heated with solid fuels.

The highest nominal chimney gas temperature in the oven junction is 600 °C.

The chimney's cross-section is circular and it's external diameter is 215 mm (thickness of the insulation is 50 mm. The outer casing material is 0,5 mm stainless steel).

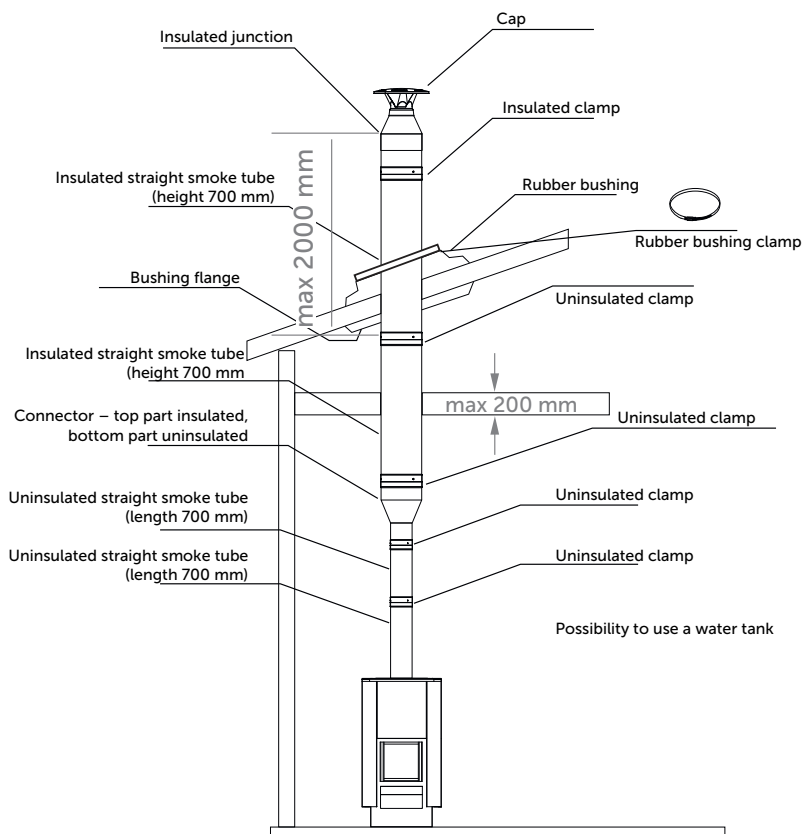
The smoke tube's diameter is 115 mm and it's made out of 1 mm stainless steel

The insulation material is mineral wool.

Chimney's maximum height is five metres, the self-supported element (for example the element protruding above the roof) may be as high as two metres.

The chimney can be mounted only in a vertical position.

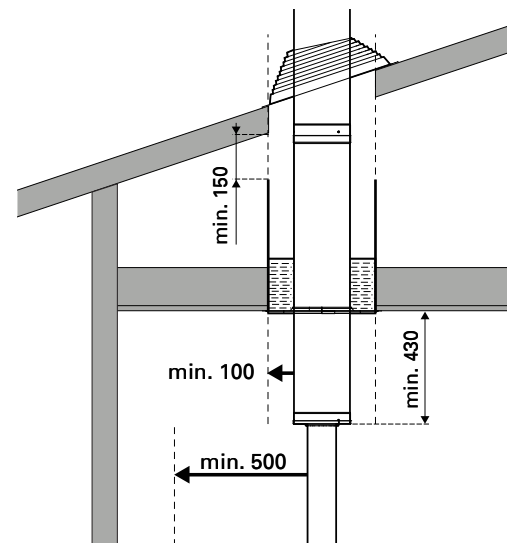
Further instructions available at the local fire department.



SAFE DISTANCES

Safe distances have to be kept at all times and under every circumstance, if these are violated, then the situation becomes fire-hazardous. In the prescribed distances from the chimney, there can not be any flammable objects.

- The safe distance between a flammable construction and the chimney's outer casing is at least 100 mm.
- In addition, the insulated chimney must be visible to the extent of at least 430 mm.
- In case the junction's frontal part is made out of uninsulated material, then the safe distance from the tube to flammable materials must be at least 500 mm.
- Using the chimney, it will heat considerably and in case it is possible to touch the chimney, then it must be protected with for example a steel mesh. The protection may not prevent the natural ventilation around the tube.
- The chimney may not be covered.
- Make sure that the safe distance of 100 mm would be guaranteed while bringing the chimney through bulkheads and the roof.
- Prevent wool and other such materials from getting into the danger area.
- Further instructions available at the local fire department.



BUSHINGS

Openings for bushings must be done to the bulkhead and the roof, the minimum size of them depends on safe distances.

- In the bushing, the constructions between the chimney and the ceiling must be filled with the isolation material ZSH-200 or with any other A-class insulation material, which has a long-term work temperature limit of 750 °C or more. If any other material is used for insulation, then it must be made sure that insulation material that is being used is not flammable.
- The chimney should be placed in such a way that the tube junctions are not aligned with the bushings.

RUBBER ROOF BUSHING'S MOUNTING

The rubber roof bushing prevents water and snow from entering the chimney's bushing's opening. If the roof profile is very high (for example roof tiles), then a single-piece flat blotch that covers the chimney's opening must be installed.

- Place the tippet from the chimney's upper tip to the surface of the roof. If need be, then a soap solution can be used as a lubricant.
- Fit the edges of the bushing carefully to the roof profile.
- Put silicone under the tippet and press the tippet to the surface of the roof. Press the redundant silicone out from under the tippet's edge.
- Attach the tippet with screws to the damper. The advisable distance is ca 35 mm.
- After this, check, whether there are no gaps. This ensures a strongly-fixed tippet.

NB! To prevent snow from getting to the tippet a special snow guard must be used. The gathered snow must be removed in order to prevent it from accumulating.



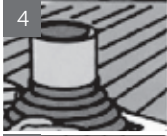
Choice of seal:
Choose the seal so that the opening of it would be 20% smaller than the diameter of the pipe.



Mounting:
Mount the seal on the tube (soap solution will ease the mounting process)



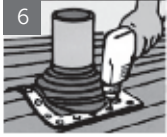
Forming:
Press the seal down and place on the roof slope. Using a tool to press the seal against the surface.



Mounting of the collar:
Mount the collar to the rubber bushing's upper corner with a lock (included in the kit)



Compression:
Put the sealant under the flange's edge and press the tippet to the surface of the roof. Press the redundant sealant out from under the tippet.



Fixation:
Fix the flange to the surface with screws. The distance between the screws should be ca 35 mm.

INSTALLATION OF THE CAP

Connect the connector with cap and fasten the collar. Do not fasten the collar too strongly.

INSTALLATION OF THE BUSHING FLANGE

Two-part bushing flange fixed to either a horizontal or a vertical ceiling, which smoothens the edges of the opening.
The bushing flange is best for a roof pitch of 12°.

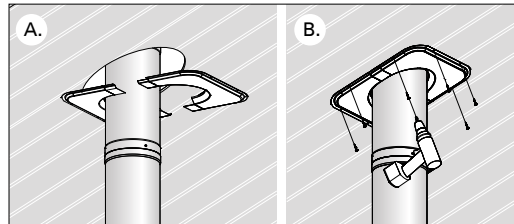
A. Install the flange's two sides around the chimney.
The less pitched the roof is, the more components will coincide.

B. Attach the bushing flange with screws
(the kit does not include screws). Be careful and screw so that the screws would not bend the blotch.

CHIMNEY CLEANING

While cleaning the chimney, only a brush made of plastic or stainless steel may be used.

The kit does not include screws or sealant-glue!



MITANOX CHIMNEY LINER SYSTEMS

Adnan Kahveci Mh. Fabrikalar Cd. NO:2/1

Gürpınar-Beylikdüzü/İSTANBUL

Tel: +90 212 886 3506/07 Fax: +90 212 886 3508

E-mail: info@mitanox.com Web: www.mitanox.com

MITANOX
BACA SİSTEMLERİ / CHIMNEY LINER SYSTEMS