



*Heart  
of Sauna*

**SKAMET**

PRODUCT CATALOGUE



## GOOD STEAM!

Sauna stoves • Smoking chambers • Water boilers

### Our sauna heaters

Our sauna heaters are produced in Estonia since 1990s. In collaboration with our customers, we have improved our products. For example, we have changed the sauna oven door, to see more fire and also all the ovens have chance to change the height of the feet.

All Skamet heaters are produced on the basis of the European Union existing standard EN 15821:2010. To obtain this standard we tested and certified our products by an independent laboratory. Skamet was one of the first in Estonia and Europe who made the certificate for its products. Based on the results of these tests, we can say that our sauna stoves are the most efficient woodburning stoves in Estonia and some of the most effective stoves throughout the Europe.

### How our sauna stoves are built

You can see in the picture, the heater is cut to half and the arrow shows how the smoke moving in smoke channel. With our heaters the flames do not reach to the chimney, it means bigger efficiency indicators.

Standard sauna heaters heating chamber ceiling is from 6 mm and the backside from 4 mm hot rolled steel. Skamet produces two types of stoves – with steel cover and net cover.



### The choice of sauna heater

If You stay in sauna usually two hours and You want hot steam – we recommend to You models: PS, P or PT

If You stay in sauna usually more than two hours – we recommend to You models: S, SY, ST or STY

If You want the oven heat the steam room – choose a model, that begins with number 1 (PS-1\*\*, P-1\*\*, S-1\*\* or SY-1\*\*).

If You want the oven heat the other room – choose a model, that begins with number 2 (PS-2\*\*, P-2\*\*, S-2\*\*, SY-2\*\*, PT-2\*\*, ST-2\*\* or STY-2\*\*).

### Choose from three options

If Your sauna room is **5-12 m<sup>3</sup>** – select the model PS

If Your sauna room is **8-18 m<sup>3</sup>** – select the model that ends with number 16 (P-\*16, S-\*16, SY-\*16, PT-216, ST-216 or STY-216)

If Your sauna room is **16-25 m<sup>3</sup>** – select the model that ends with number 20 (P-\*20, S-\*20, SY-\*20, PT-220, ST-220 or STY-220)

### NB!

A very important factor for selecting a sauna stove is properly built steam room. Select sauna oven carefully. If the heating power is too small, then You have to heat the oven for longer and more intensively, which means that the life of the stove is decrease.

If in Your sauna is the glass, bricks or other uninsulated wall, it will be each square meter of 1.2 cubic meters additional capacity.

In case of log wall should be the actual volume multiplied about by 1,5.

Also should be pay attention to ventilation. Proper air circulation in the sauna guarantee the fresh clean air to breathe.

### Heating time

If You choose stove according to Your stage size and other parameters, then the right sauna stove with metal cover heat-up time (90° – 100°) is about 30–45 minutes. Net cover sauna oven heat-up time is longer, about 60–90 minutes, but a large number of stones will keep steam room warm for a long time, even if the fire has been gone.

### Skamet wood-burning stoves have CE-marking

All Skamet heaters are produced on the basis of the European Union existing standard EN 15821:2010. To obtain this standard we tested and certified our products by an independent laboratory. Skamet stoves respond all international fire and safety requirements, which came into force in Estonia on 1 July 2012. Our heater efficiency indicators are all above 70%, which is higher than the EU standard require (50%).



# SAUNA STOVES WITH STEEL COVER

(The stones are at the top of the stove)



Sauna stoves with steel cover are manufactured from the year 1990. If You choose according to Your stage size and other parameters, then the right sauna stove (without water heaters) with metal cover heat-up time is about 30–45 minutes (with water heater the heating time will be extended in accordance with the size of the boiler). Skamet Ltd confirms that our sauna stoves correspond to the CE certificate, and our production have been followed by the EN 15821: 2010 standard.

## Sauna heater (steel cover) – heatable in the same room

Sauna stove model **P-116**

Sauna stove model **P-120**

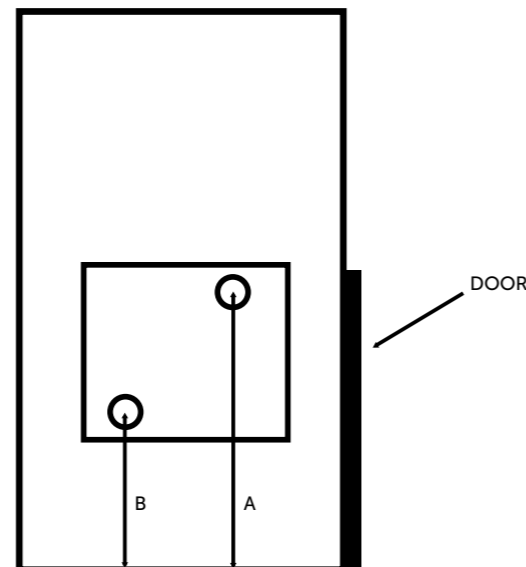
### Standard product parameters:

- » Boiler connection (right, left, behind) or without
- » Glassdoor (230 x 230 mm) or without
- » Chimney connection from top and behind
- » The color of the case is black



SKAMET WOOD-BURNING STOVES	P-116	P-120
Heated volume (m <sup>3</sup> )	8-18	16-25
Stove height (cm)	73	81
Stove width (cm)	43	43
Stove depth (cm)	51	51
Chimney connector height from the floor (cm)	56	68,5
The amount of stones (kg)	40	50
A*	44	44
B*	24	24

\*Tolerance +/- 0,5 cm



# SAUNA STOVES WITH STEEL COVER

(The stones are at the top of the stove)



## Sauna heater (steel cover) - heatable in the other room

Sauna stove model **P-216**

Sauna stove model **P-220**

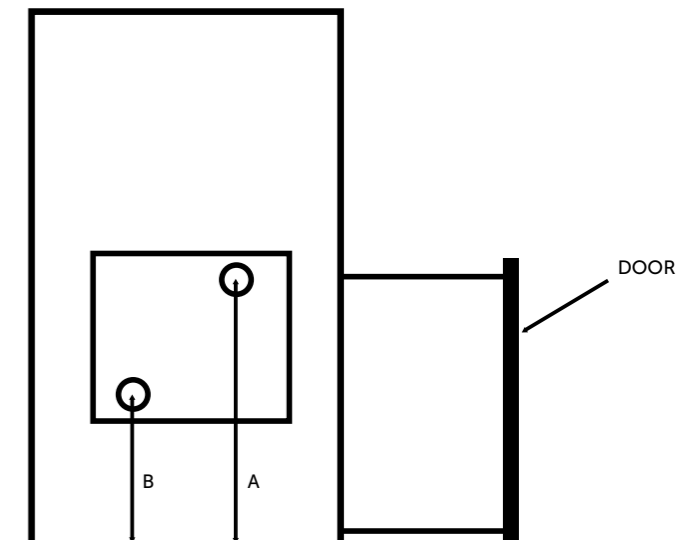
### Standard product parameters:

- » Boiler connection (right, left, behind) or without
- » Glassdoor (230 x 230 mm) or without
- » Chimney connection from top
- » The color of the case is black



SKAMET WOOD-BURNING STOVES	P-216	P-220
Heated volume (m <sup>3</sup> )	8-18	16-25
Stove height (cm)	73	81
Stove width (cm)	43	43
Stove depth (cm)	51	51
Through the wall tunnel (cm)	17	17
Through the wall section height (cm)	45	45
Through the wall section width (cm)	33	33
The amount of stones (kg)	40	50
A*	44	44
B*	24	24

\*Tolerance +/- 0,5 cm



# SAUNA STOVES WITH ANGULAR NET COVER

(The stones are at around the stove)



Net cover sauna stoves are manufactured from the year 2006. If You choose according to Your stage size and other parameters, then the right sauna stove (without water heaters) with net cover heat-up time is about 60–90 minutes (with water heater the heating time will be extended in accordance with the size of the boiler). Net cover sauna stoves, which lack the welded connection of the boiler, can be purchased separately water pocket (VT), that can be fitted on different sides of stove. Skamet Ltd confirms that our sauna stoves correspond to the CE certificate, and our production have been followed by the EN 15821: 2010 standard.

## Sauna heater (angular net cover) – heatable in the same room

Sauna stove model **S-116**

Sauna stove model **S-120**

### Standard product parameters:

- » Boiler connection (right, left, behind) or without
- » Glassdoor (230 x 230 mm) or without
- » Chimney connection from top

SKAMET WOOD-BURNING STOVES	S-116	S-120
Heated volume (m <sup>3</sup> )	8-18	16-25
Stove height (cm)	78	84
Stove width (cm)	49	49
Stove depth (cm)	61	61
The amount of stones (kg)	190	160



# SAUNA STOVES WITH ANGULAR NET COVER

(The stones are at around the stove)



## Sauna heater (angular net cover) – heatable from the other room

Sauna stove model **S-216**

Sauna stove model **S-220**

### Standard product parameters:

- » Boiler connection (right, left, behind) or without
- » Glassdoor (230 x 230 mm) or without
- » Chimney connection from top

SKAMET WOOD-BURNING STOVES	S-216	S-220
Heated volume (m <sup>3</sup> )	8-18	16-25
Stove height (cm)	78	84
Stove width (cm)	49	49
Stove depth (cm)	61	61
Through the wall tunnel (cm)	20	20
Through the wall section height (cm)	45	45
Through the wall section width (cm)	33	33
The amount of stones (kg)	190	160



# SAUNA STOVES WITH AROUND NET COVER

(The stones are at around the stove)



# SAUNA STOVES WITH AROUND NET COVER

(The stones are at around the stove)



Net cover sauna ovens are manufactured from the year 2006. If You choose according to Your stage size and other parameters, then the right sauna stove (without water heaters) with net cover heat-up time is about 60–90 minutes (with water heater the heating time will be extended in accordance with the size of the boiler). Net cover sauna stoves, which lack the welded connection of the boiler, can be purchased separately water pocket (VT), that can be fitted on different sides of stove. Skamet Ltd confirms that our sauna stoves correspond to the CE certificate, and our production have been followed by the EN 15821: 2010 standard.

## Sauna heater (round net cover) – heatable in the same room

Sauna stove model **SY-116**

Sauna stove model **SY-120**

### Standard product parameters:

- » Boiler connection (right, left, behind) or without
- » Glassdoor (230 x 230 mm) or without
- » Chimney connection from top
- » Net diameter 56 cm

SKAMET WOOD-BURNING STOVES	SY-116	SY-120
Heated volume (m <sup>3</sup> )	8-18	16-25
Stove height (cm)	78	84
Stove width (cm)	Ø 56	Ø 56
Stove depth (cm)	Ø 56	Ø 56
The amount of stones (kg)	140	110



## Sauna heater (round net cover) – heatable from the other room

Sauna stove model **SY-216**

Sauna stove model **SY-220**

### Standard product parameters:

- » Boiler connection (right, left, behind) or without
- » Glassdoor (230 x 230 mm) or without
- » Chimney connection from top
- » Net diameter 56 cm

SKAMET WOOD-BURNING STOVES	SY-216	SY-220
Heated volume (m <sup>3</sup> )	8-18	16-25
Stove height (cm)	78	84
Stove width (cm)	Ø 56	Ø 56
Stove depth (cm)	Ø 56	Ø 56
Through the wall tunnel (cm)	20	20
Through the wall section height (cm)	45	45
Through the wall section width (cm)	33	33
The amount of stones (kg)	140	110



# SAUNA STOVES WITH BIG GLASSDOOR

(The stones are at the top of the stove)



If You wish to heat the sauna, while enjoying fire in another room on the sofa, then the stove with big glassdoor specially for You. The stove has bigger (330 x 330 mm) glassdoor which gives a cozy and a real fireplace effect. Net cover sauna stoves, which lack the welded connection of the boiler, can be purchased separately water pocket (vT), that can be fitted on different sides of stove. Skamet Ltd confirms that our sauna stoves correspond to the CE certificate, and our production have been followed by the EN 15821: 2010 standard.

## Sauna heater (steel cover and upper plate stainless) – heatable from the other room

Sauna stove model **PT-216**

Sauna stove model **PT-220**

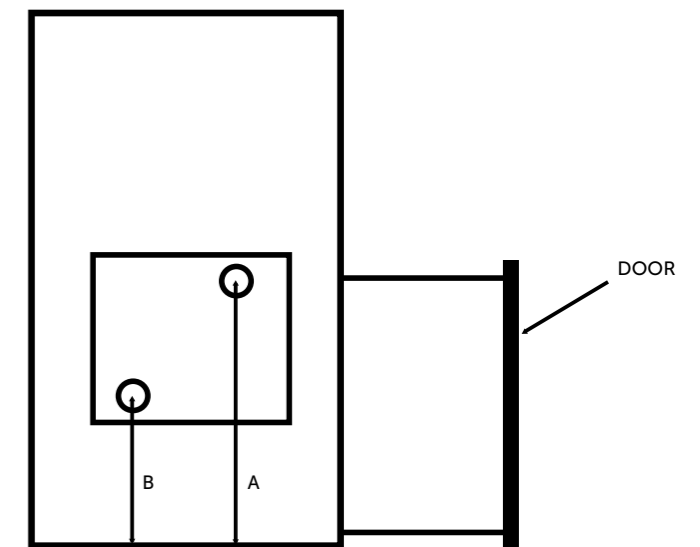
### Standard product parameters:

- » Boiler connection (right, left, behind) or without
- » Glassdoor (330 x 330 mm)
- » Chimney connection from top
- » Top panel of stainless steel



SKAMET WOOD-BURNING STOVES	PT-216	PT-220
Heated volume (m <sup>3</sup> )	8-18	16-25
Stove height (cm)	73	81
Stove width (cm)	43	43
Stove depth (cm)	51	51
Through the wall tunnel (cm)	17	17
Through the wall section height (cm)	55	55
Through the wall section width (cm)	44	44
The amount of stones (kg)	40	50
A*	44	44
B*	24	24

\*Tolerance +/- 0,5 cm



# SAUNA STOVES WITH BIG GLASSDOOR

(The stones are at around the stove)

## Sauna heater (angular net) – heatable from the other room

Sauna stove model **ST-216 GL**

Sauna stove model **ST-220 GL**

### Standard product parameters:

- » Boiler connection (right, left, behind) or without
- » Glassdoor (330 x 330 mm) or without
- » Chimney connection from top

SKAMET WOOD-BURNING STOVES	ST-216 GL	ST-220 GL
Heated volume (m <sup>3</sup> )	8-18	16-25
Stove height (cm)	78	84
Stove width (cm)	49	49
Stove depth (cm)	61	61
Through the wall tunnel (cm)	20	20
Through the wall section height (cm)	55	55
Through the wall section width (cm)	44	44
The amount of stones (kg)	190	160



## Sauna heater (round net) – heatable from the other room

Sauna stove model **STY-216 GL**

Sauna stove model **STY-220 GL**

### Standard product parameters:

- » Boiler connection (right, left, behind) or without
- » Glassdoor (330 x 330 mm) or without
- » Chimney connection from top
- » Net diameter 56 cm

SKAMET WOOD-BURNING STOVES	STY-216 GL	STY-220 GL
Heated volume (m <sup>3</sup> )	8-18	16-25
Stove height (cm)	78	84
Stove width (cm)	Ø 56	Ø 56
Stove depth (cm)	Ø 56	Ø 56
Through the wall tunnel (cm)	20	20
Through the wall section height (cm)	55	55
Through the wall section width (cm)	44	44
The amount of stones (kg)	140	110



# SAUNA STOVES WITH WATER TANK

(The stones are at the top of the stove)

Sauna stoves with water tank is a good choice for holiday houses or countryside saunas. If You have a sauna house beside a river or lake, where is no proper water supply system, but You still want warm water, then it is the right solution for You. At the same time the sauna heater heats-up steam room and water in the water tank. The tank supplies hot water for washing and steam. The furnace tank is removable, so it is easy to change. If You have poor quality water, it is recommended to choose stainless steel tank, because steel causing rust and Your water may not be fit for washing.

## Sauna heater (with 40 liters tank) – heatable in the same room

Sauna stove model **P-11640**

Sauna stove model **P-12040**

### Standard product parameters:

- » Exchangeable tank of steel or stainless steel
- » Water tank chance right, left or behind
- » Glassdoor (230 x 230 mm) or without
- » Chimney connection from top and behind
- » Cover black colored and top panel of stainless steel
- » Faucet

SKAMET WOOD-BURNING STOVES	P-11640	P-12040
Heated volume (m <sup>3</sup> )	8-18	16-25
Stove height (cm)	73	81
Stove width (cm)	61	61
Stove depth (cm)	51	51
The amount of stones (kg)	40	50



## Sauna heater (with 40 liters tank) – heatable from the other room

Sauna stove model **P-21640**

Sauna stove model **P-22040**

### Standard product parameters:

- » Exchangeable tank of steel or stainless steel
- » Water tank chance right, left or behind
- » Glassdoor (230 x 230 mm) or without
- » Chimney connection from top and behind
- » Cover black colored and top panel of stainless steel
- » Faucet

SKAMET WOOD-BURNING STOVES	P-21640	P-22040
Heated volume (m <sup>3</sup> )	8-18	16-25
Stove height (cm)	73	81
Stove width (cm)	61	61
Stove depth (cm)	51	51
Through the wall tunnel (cm)	17	17
Through the wall section height (cm)	45	45
Through the wall section width (cm)	33	33
The amount of stones (kg)	40	50



# SAUNA STOVES WITH WATER TANK

(The stones are at the top of the stove)



## Sauna heater (with 20-25 liters tank) – heatable in the same room

Sauna stove model **P-11620**

Sauna stove model **P-12025**

### Standard product parameters:

- » 20-25 liters tank of stainless steel in front
- » Glassdoor (230 x 230 mm) or without
- » Chimney connection from top and behind
- » Cover black colored and top panel of stainless steel
- » Faucet

SKAMET WOOD-BURNING STOVES	P-11620	P-12025
Heated volume (m <sup>3</sup> )	8-18	16-25
Stove height (cm)	73	81
Stove width (cm)	43	43
Stove depth (cm)	71	71
The amount of stones (kg)	40	50



# MINI SAUNA STOVES

(The stones are at the top of the stove)



Mini sauna stoves models are designed for smaller sauna rooms and barrel saunas. Stoves are equipped with a **double wall** on three sides (sides and back), that reduces the minimum safe distances from combustible materials by half, as compared with our other P-series stoves (distance in the user manual). All PS models have chimney connection from top and glassdoor 200 x 220 mm. Skamet Ltd confirms that our sauna stoves correspond to the CE certificate, and our production have been followed by the EN 15821:2010 standard.

## Small sauna heater (double walled steel cover) - heatable in the same room

Sauna stove model **PS-110 GL**

### Standard product parameters:

- » Glassdoor (200 x 220 mm) or without
- » Chimney connection from top
- » Double walled
- » The color of the case is black

## Sauna heater (double walled steel cover) – heatable from the other room

Sauna stove model **PS-210 GL**

### Standard product parameters:

- » Glassdoor (200 x 220 mm) or without
- » Chimney connection from top
- » Double walled
- » The color of the case is black

SKAMET WOOD-BURNING STOVES	PS-110 GL	PS-210 GL
Heated volume (m <sup>3</sup> )	5-12	5-12
Stove height (cm)	60	60
Stove width (cm)	39	39
Stove depth (cm)	45	45
Through the wall tunnel (cm)	-	17
Through the wall section height (cm)	-	38
Through the wall section width (cm)	-	29
The amount of stones (kg)	20	20





In 2008 started Skamet smoking chambers producing. Over the years smoking chambers have become very popular and have also received very positive feedback from the final consumer. In addition to the smoking chambers we produce different sizes of classic meat grills.

## Smoking chamber

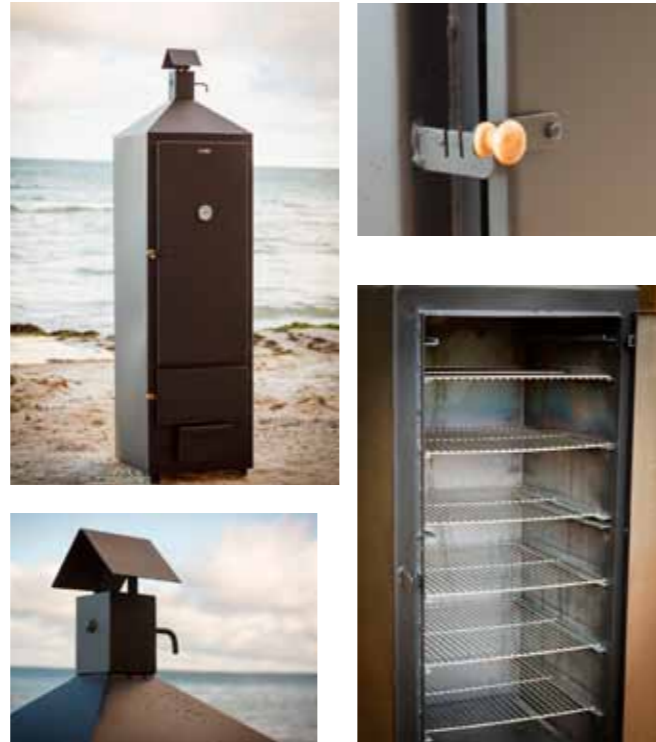
The smoking chamber is meant for fish-, meat- and poultry meat heating. The chamber is suitable for a cottage, private home garden, or for a country home. The smoking chamber design is double layered (sides and back) where the circulating heated smoke is kept at a consistent steady temperature. The double layers help avoiding the condensation water accumulating, if the outside temperature happens to be low.

- GSS-125:** two stainless steel plates
- GSS-200:** four stainless steel plates
- GSS-200 XL:** six stainless steel plates

### Standard product parameters:

- » Oil and water plate
- » Termometer
- » Angular chimney with damper
- » Medium and large model hat is removable

\*Opportunity to order separately transition from angular to round!



## Meat grills

Classic grill is easy to use and to take camping.

- LV-100** (100 x 40 x 17 cm)
- LV-70** (70 x 30 x 17 cm)
- LV-50** (50 x 30 x 17 cm)

### Standard product parameters:

- » Removable legs
- » Material thickness of 2 mm
- » Height 90 cm



## Fireplace

Fireplace is designed to be used either for making a fire or grilling meat. The standard product material thickness is 2 mm. Possibility to order thicker material. We produce fireplaces also of the customer's own wishes, for example: a larger diameter, and the stainless steel material.

### LA-35

#### Standard product parameters:

- » Material thickness of 2 mm
- » Diameter 45 cm
- » Height 30 cm
- » On the legs



Besides sauna stoves and other accessories we also produce other firewood powered stoves. For example, the stove-ovens that are ideal for room heating in summerhouses and country houses. In addition, we produce water heaters to open and closed water system. Stoves production have been followed by the EN 13240:2007 standard.

## Stove with net for the vertical water heater

Stove **SO-110** with closed water tank, heatable volume 6-10 m<sup>3</sup>.

### Standard product parameters:

- » Water heater capacity (110 liters)
- » Glassdoor (230 x 230 mm) or without
- » Thermometer for water pressure
- » Chimney connection from top of the water heater
- » Around the stove angular net cover

## Stove for the open water heater

Stove **PO-110**.

### Standard product parameters:

- » Water heater capacity (110 liters)
- » Glassdoor (230 x 230 mm) or without
- » Chimney connection from behind
- » Water tank from metal or stainless steel



## Cooking stove

Cooking stove **C-120** for cooking and room heating, heatable volume 20-150 m<sup>3</sup>.

### Standard product parameters:

- » Capacity 40 kW
- » Glassdoor (230 x 230 mm) or without
- » Boiler connection (right, left) or without
- » Chimney connection from behind
- » Cast-iron baking sheet
- » Storage room for firewood



Our production include also different beauty slats, stainless steel chimney set and net around smokepipe – there You can put in stones.

## Net around smoking pipe

### Standard product parameters:

- » Length 250 – 800 mm
- » Diameter 250 mm
- » Openable (only length 500 mm) or closed net



## Beauty slat for sauna heater

### Standard product parameters:

- » Can be from stainless steel or from steel (powder coated)
- » Covers the 3 cm spacing around the door
- » ILU-200 and ILU-200 RV for PS seria stoves
- » ILU-230 and ILU-230 RV for P, S and SY seria stoves
- » ILU-330 and ILU-330 RV for PT, ST and STY seria stoves



ILU-200



ILU-230 RV



ILU-330

## Stainless steel chimney + rubber roof flashing

### ARK-115

### Standard product parameters:

- » The rated maximum temperature of combustion gases for a furnace connected to a steel chimney is 600 °C
- » The external diameter of the steel chimney is 200 mm
- » The diameter of the smokepipe is 115 mm and made from 0,6 mm stainless steel
- » Chimney has a CE-marking, so the product complies with all international fire- and operational safety requirements



Skamet produce also different containers: water heaters and accumulation tanks. These we produce both: black and stainless steel. The boiler standard product diameters are 40 and 45 cm and volume 80–150 liters. We produce both closed water heaters, which can be connected to a water main and used to pressure and also opened water heaters, that can be used without pressure. Water heaters can be ordered horizontally or vertically. In addition, we also produce boilers and tanks for special orders. All water boilers are **recommended to hedge**.

## Closed water heaters for wood-burning ovens

Water heater **B-80 – B-150** for wood-burning stoves

### Standard product parameters:

- » Volume 80–150 liters
- » Horizontal
- » Vertical
- » Steel (3 mm)
- » Stainless steel (2 mm) with anode
- » Diameter 400 mm or 450 mm



## Open water heaters for wood-burning ovens

Open water heater **BO-80 – BO-150**

### Standard product parameters:

- » Volume 80–150 liters
- » Steel (3 mm)
- » Stainless steel (2 mm)
- » Diameter 400 mm or 450 mm
- » The bottom 1/2" nipple to let water out

## Open water tank around the smokepipe

Open water heater **BOT-25** placed directly onto the stove

### Standard product parameters:

- » Diameter 300 mm
- » Height 650 mm
- » Volume 25 liters
- » Made of steel
- » Smokepipe inner diameter 115 mm



## Stainless steel open water tank around the smokepipe

Open water heater **BOT-22 RV** placed directly onto the stove

### Standard product parameters:

- » Diameter 350 mm
- » Height 400 mm
- » Volume 22 liters
- » Made of stainless steel
- » Smokepipe inner diameter 115 mm





# SKAMET

OÜ Skamet  
Savi 9, Pärnu, Estonia  
+372 440 1001  
info@skamet.ee  
www.skamet.ee